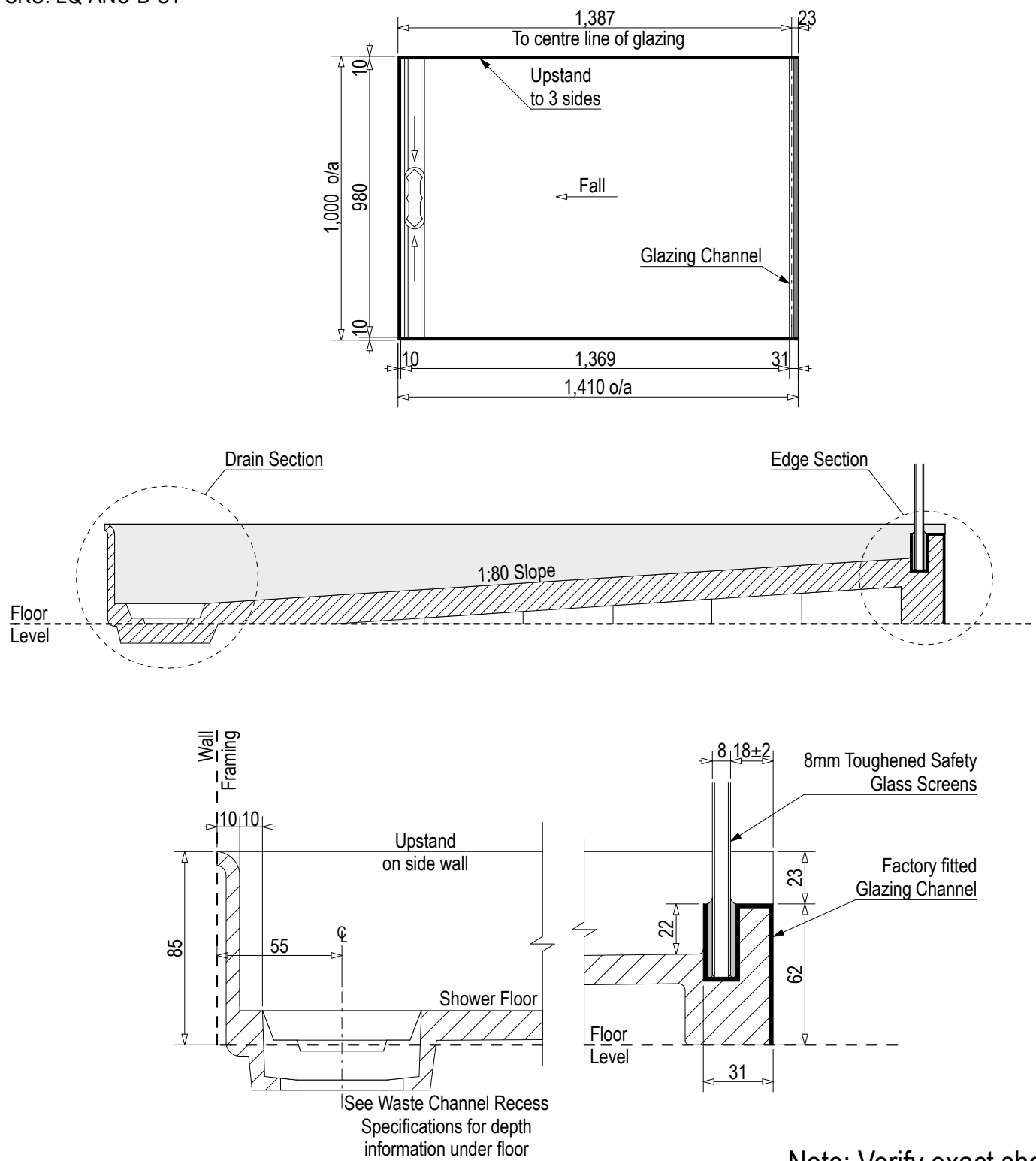


Note: Drain position central unless dimensioned otherwise

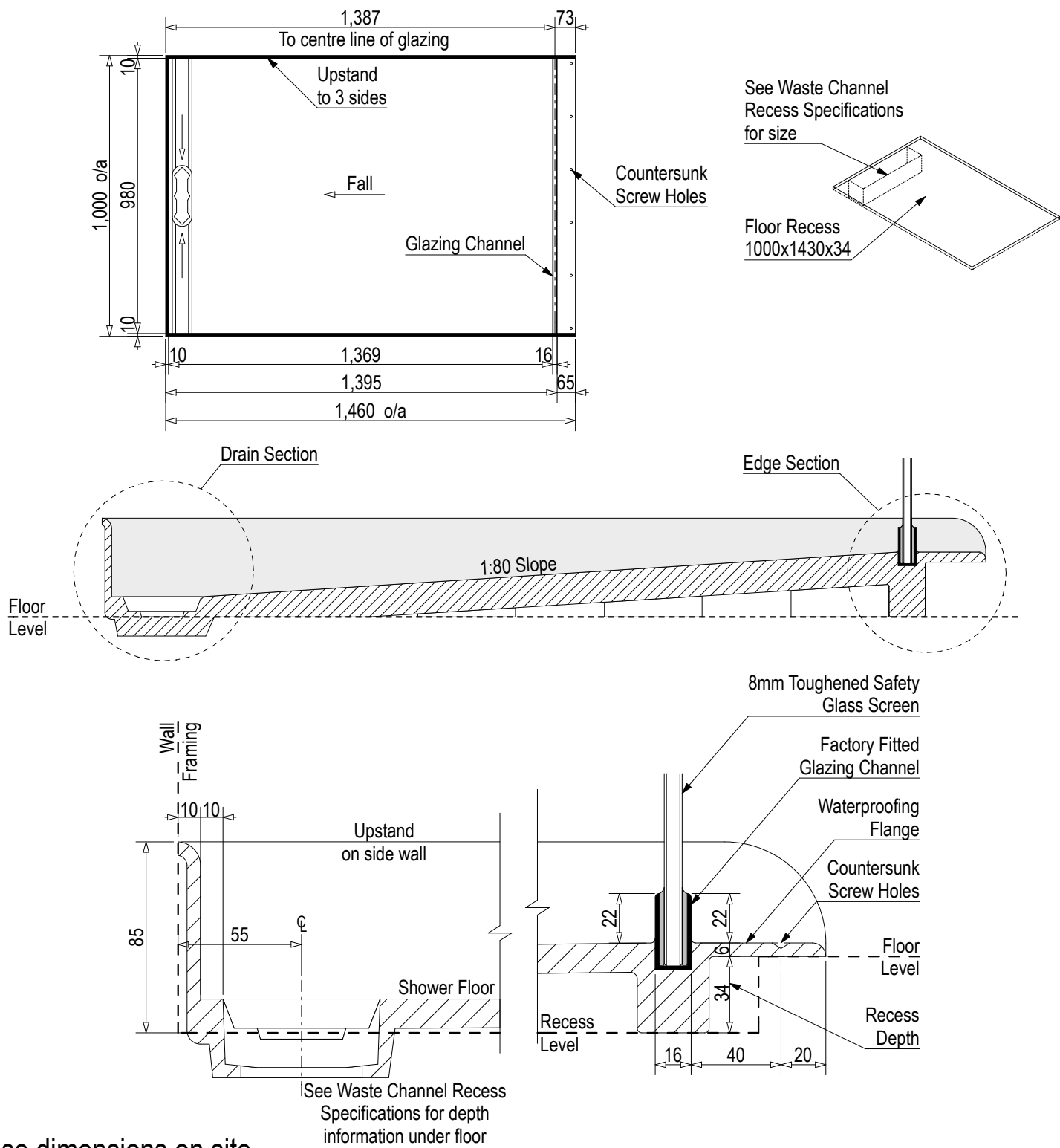
# Step Entry

SKU: LQ-ANC-B-ST



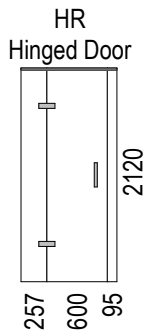
# Level Entry

SKU: LQ-ANC-B-LE



Note: Verify exact shower base dimensions on site

## Screen Options:



All 3 Wall Screens are reversible

For more product information go to:

[www.atlantis.co.nz/shop/linea-quattro/anchorage-1000x1400/](http://www.atlantis.co.nz/shop/linea-quattro/anchorage-1000x1400/)

For installation instructions go to:

[www.atlantis.co.nz/trade/installation/](http://www.atlantis.co.nz/trade/installation/)