



BASE AND WASTE FITTING INSTRUCTIONS

BFK-QUUB-2018

Quub

EASY CLEAN WASTE FITTING

Included with this product – BFK-QUUB-2018:

1 x	White Waste Cover	<input type="checkbox"/>
1 x	Waste Fitting – 40mm Easy Clean	<input type="checkbox"/>
1 x	Waste installation key	<input type="checkbox"/>
2 x	SturdiBond construction adhesive	<input type="checkbox"/> <input type="checkbox"/>
1 x	White NG silicone	<input type="checkbox"/>
1 x	Quick Start Guide	<input type="checkbox"/>
1 x	Base fitting instructions (this booklet)	<input type="checkbox"/>

Other equipment required

Broom
Accurate level
Adhesive application / caulking gun
Tape measure
Levelling compound and associated equipment
(only required for shower base being installed into a concrete recess)

Included with this base package

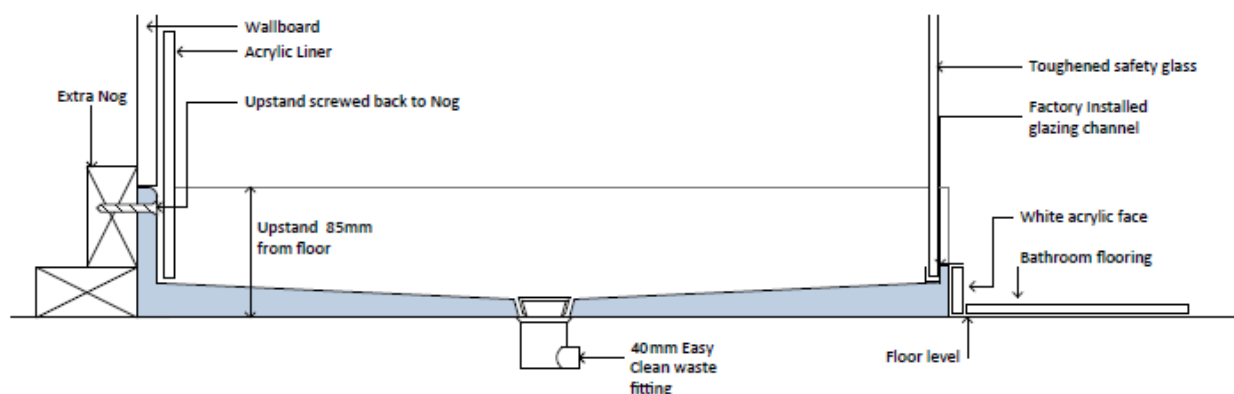
1 x	Shower Base	<input type="checkbox"/>
1 x	Acrylic Trim – QU-TRIM	<input type="checkbox"/>

The installation process requires the body of the waste fitting to be installed prior to the installation of the base. This should be undertaken by a qualified plumber.

Atlantis showers are supplied with SturdiBond to adhere the base to the floor substrate. It is recommended that Gorilla Grip is used if the temperature drops below 5 degrees.

Quub acrylic shower base profile

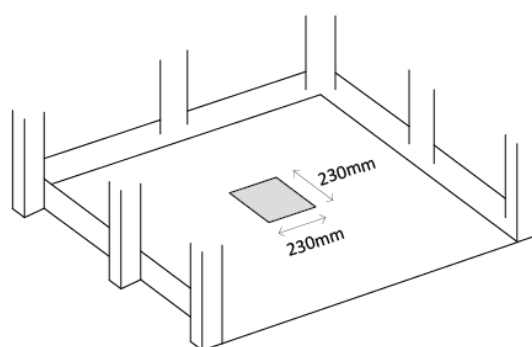
(NOT TO SCALE)



FLOOR PREPARATION – on any floor type

1. Sweep floor free of dust
2. Provide a hole for the waste fitting to a minimum size of 230mm x 230mm, FIGURE 1, in the correct position to suit the shower base.
3. Dry fit the shower base onto the flooring to ensure it is able to be installed level. The top of the glazing channel(s) and top edges of the upstands must be level. Re-check that the Waste Body Assembly is correctly aligned with the centre of the base hole. Ensure all base rings are supported by flooring.

FIGURE 1

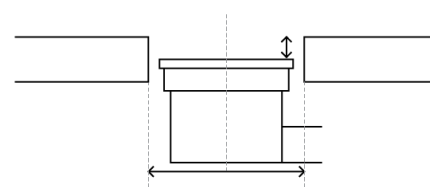
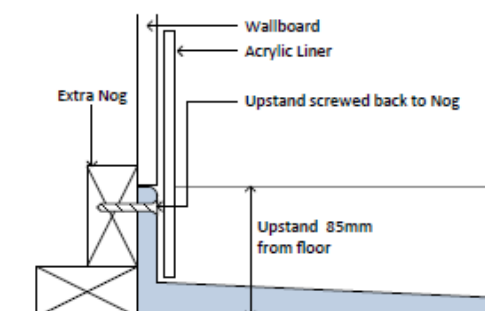


NOTE: It is the responsibility of the installer to:

- Ensure the shower base has been installed level, and
- Ensure that the shower base drains sufficiently before the shower base is adhered to the floor

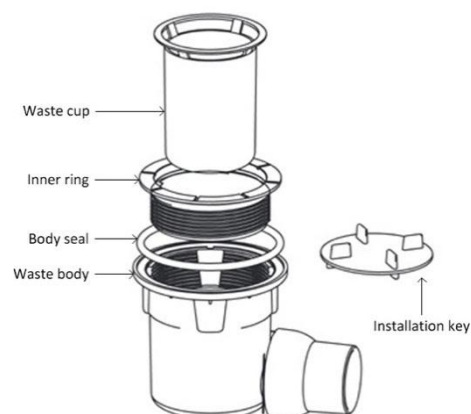
FIGURE 2

25mm lower than floor level



230mm x 230mm
hole in floor

FIGURE 3



4. Separate the components of the waste into:
 - A. the inner ring and waste cup
 - B. the waste body and body seal
5. Connect the waste body to the pipework, FIGURE 2, ensuring that the body seal is in the correct position and 25mm below the floor level, as in FIGURE 2 and 3

BASE INSTALLATION

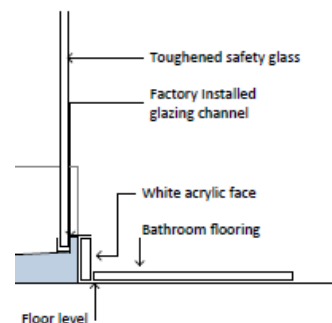
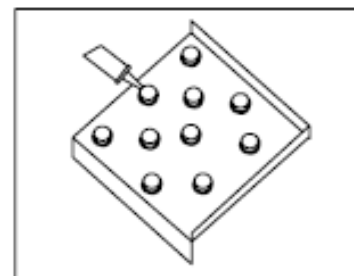
6. Clear floor of all debris and dust
7. Apply supplied construction adhesive liberally to the webbed support rings
8. Install base in final position, ensuring that it is level
9. The inside face of the upstand must be flush with the inside face of the wall board.
10. Allow suitable time for the base adhesive to cure.

ACRYLIC TRIM

11. Dry fit 10mm acrylic trim (QU-TRIM) to front face of shower base. Trim length to suit shower base.
12. Silicone into place using supplied white silicone. Tape and let silicone cure.

WASTE CONNECTION

13. Insert the inner ring through the waste outlet in the shower base and screw the inner ring into the waste body. Hand tighten using the installation key.
14. Place the waste cup and Easy Clean component (not pictured) into position within the inner ring.



IMPORTANT NOTES

- If tiling the walls the wall glazing channels must be fitted to the wall after waterproofing, **prior to tiling**.
- Ensure the shower base has been installed level.