

EASYNICHE TILE-OVER ACCESSORY

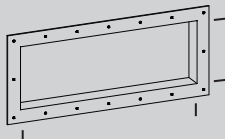
NEW EASYNICHE™ SIZES AVAILABLE TO FIT WITH YOUR CHOICE OF TILE

Start with your overall tile length to select the EasyNiche™ that will work best for your space.

Standard thickness tiles will fit the recess size indicated.

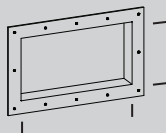
LARGE RECTANGLE

OVERALL TILE LENGTH	RECESS SIZE (mm)	CODE
1500mm	1540 X 340	EN1500
1200mm	1240 X 340	EN1200
900mm	940 X 340	EN900
750mm	790 X 340	EN750



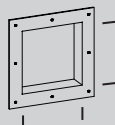
SMALL RECTANGLE

OVERALL TILE LENGTH	RECESS SIZE (mm)	CODE
600mm	640 X 340	EN600
500mm	540 X 340	EN500
450mm	490 X 340	EN450
350mm	390 X 340	EN350
200mm	240 X 340	EN200



SQUARE

OVERALL TILE LENGTH	RECESS SIZE (mm)	CODE
300mm	340 X 340	EN300



FOOT REST

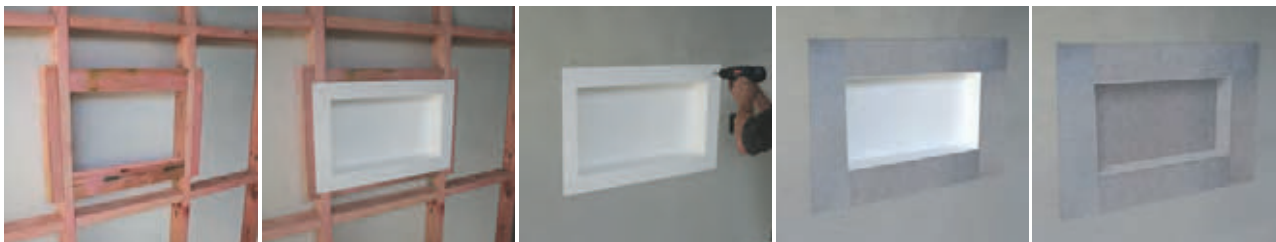
OVERALL TILE LENGTH	RECESS SIZE (mm)	CODE
140mm	180 X 120	EN140F



SPECIFICATION

- One-piece lightweight construction made from rigid HIPS composite.
- 100% waterproof.
- Immediately ready-to-tile (once interlayer is applied).
- Built-in gradient prevents water ponding.
- Compliant with NZ Building Code and AS3740.
- Fits into 90mm wall cavity.
- 65mm waterproofing flange.
- Suitable for horizontal or vertical installation (except footrest).
- Suitable for all wallboards (recommended 6mm minimum).
- Supplied with self-adhesive connection sheet for waterproofing, primer and fixings.
- Must be installed prior to wallboard, and requires additional framing for correct setup.
- 25-year durability and leak-free warranty.

INSTALLS EASILY INTO WALL FRAMING



Overview only. See installation instructions or video on our website for correct method.